

BYLAW NO. 474/04

**BEING A BYLAW OF THE
MUNICIPAL DISTRICT OF MACKENZIE NO. 23
IN THE PROVINCE OF ALBERTA**

**A BYLAW OF THE MUNICIPAL DISTRICT OF MACKENZIE NO. 23
FOR THE IMPOSITION OF AN OFFSITE LEVY**

WHEREAS, the Municipal Government Act, being Chapter M-26.1 of the Statutes of Alberta enables Council by Bylaw to provide for the imposition and payment of an off-site levy in respect of land to be developed or subdivided;

AND WHEREAS, an off-site levy may be used only to pay for all or part of the capital cost for new or expanded facilities for the treatment, movement or disposal of sanitary sewage,

NOW THEREFORE, the Council of the Municipal District of Mackenzie No. 23, in the Province of Alberta, duly assembled, hereby enacts as follows:

1. The Municipality, in its discretion may impose an off-site levy at the development stage.
2. The off site levy shall be imposed for the following project:

SEWAGE LIFT STATION NUMBER 5
 - a) Addition of a sewer lift station in La Crete, Alberta, located at 91 Ave. and 100 Street to meet the demands of residential and industrial development requirements.
 - b) 250 mm trunk sewer diverting all of the community sewage flows to the new sewage lift station.
 - c) A sewage lift station with all ammenities.
 - d) 150 mm forcemain connecting the sewage lift station to the existing sewage forcemain
3. Residential Area benefiting with the imposition of this bylaw as outlined on Schedule "A" attached hereto.
4. Industrial Area benefiting with the imposition of this bylaw as outlined on Schedule "B" attached hereto.
5. The Administration of the Municipal District of Mackenzie may enter into an agreement in respect to payment of the off-site levy for larger subdivisions.

6. In the absence of an agreement for the payment of an off-site levy, where an owner of land proposes to construct a development, the payment of such levy shall be made prior to the issuance of a development permit.
7. The lift station and forcemain costs are prorated on a hectare basis against the industrial and residential benefiting areas.
8. The gravity sewer lines are assessed against the residential area only.
9. The off-site levy charge for this project shall be \$616.00 per hectare for the industrial area and \$1,185.00 per hectare for the residential area benefiting from this lift station, as shown on Schedules "A" and "B".

First Reading given on the 14th day of December 2004.

"B. Neufeld" (signed)

Bill Neufeld, Reeve

"B. Spurgeon" (signed)

Barbara Spurgeon, Executive Assistant

Second Reading given on the 25th day of January 2005.

"W. Sarapuk" (signed)

Walter Sarapuk, Deputy Reeve

"B. Spurgeon" (signed)

Barbara Spurgeon, Executive Assistant

Third Reading and Assent given on the 25th day of January 2005.

"W. Sarapuk" (signed)

Walter Sarapuk, Deputy Reeve

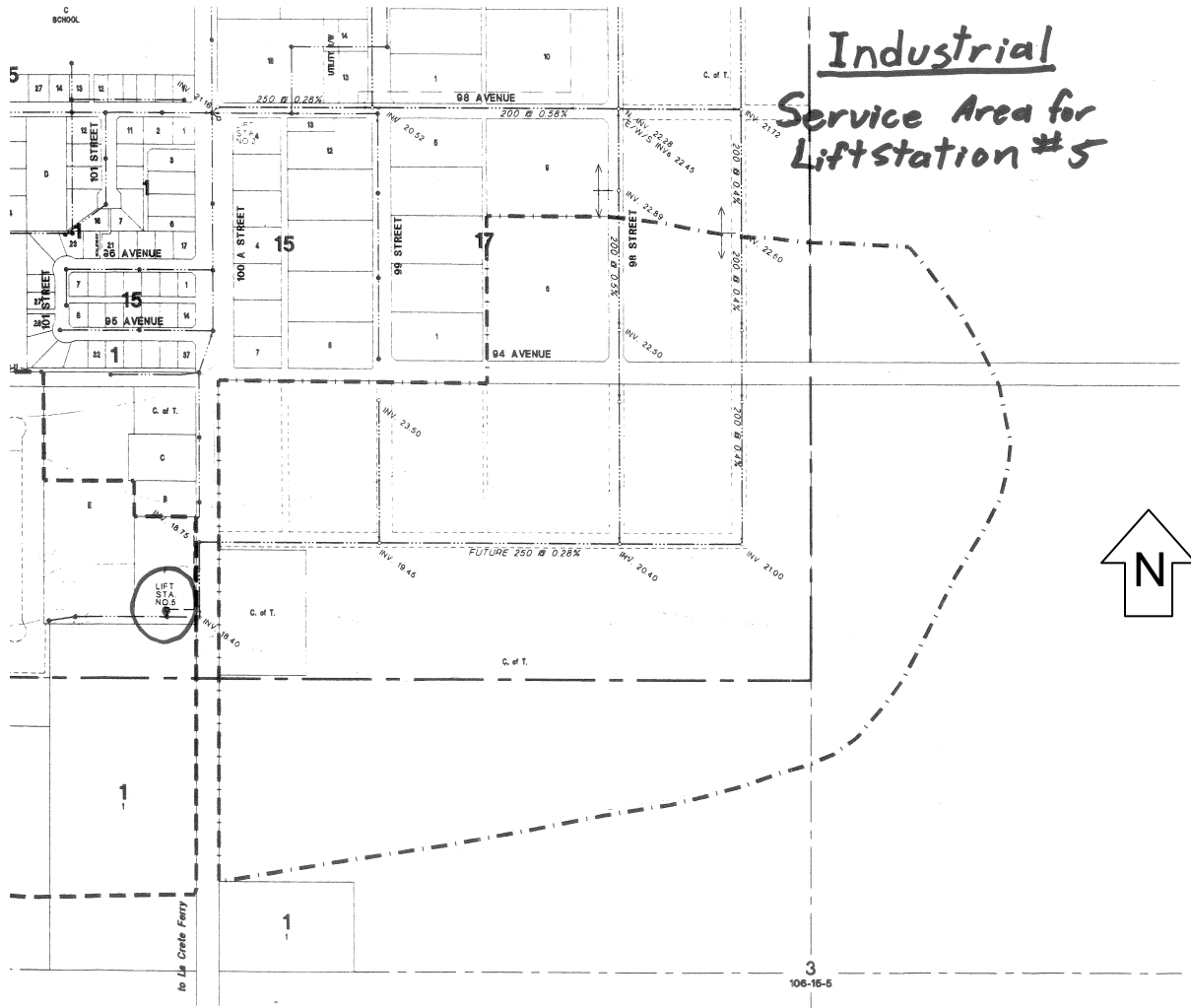
"B. Spurgeon" (signed)

Barbara Spurgeon, Executive Assistant

BYLAW No. 474/04

SCHEDULE "A"

That the benefiting industrial area be established as follows:



“W. Sarapuk” (signed)
Walter Sarapuk, Deputy Reeve

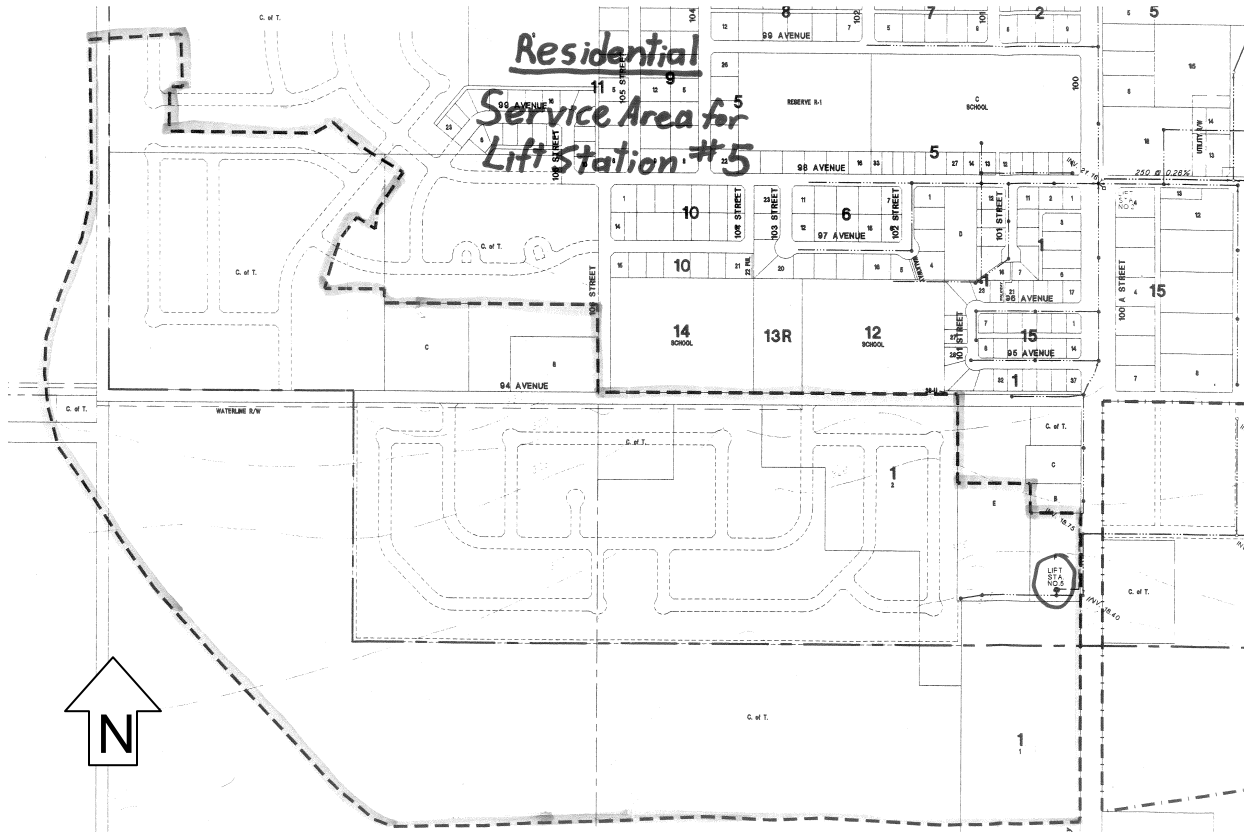
“B. Spurgeon” (signed)
Barbara Spurgeon, Executive Assistant

EFFECTIVE THIS 25th DAY OF JANUARY 2005.

BYLAW No. 474/04

SCHEDULE "B"

That the benefiting residential area be established as follows:



“W. Sarapuk” (signed)
Walter Sarapuk, Deputy Reeve

“B. Spurgeon” (signed)
Barbara Spurgeon, Executive Assistant

EFFECTIVE THIS 25TH DAY OF JANUARY 2005.